

**REPORT ON THE JOINT WORLD HERITAGE CENTRE - ICOMOS -
IUCN- REACTIVE MONITORING MISSION TO THE
WORLD HERITAGE PROPERTY OF**

“IBIZA, BIODIVERSITY AND CULTURE”

(SPAIN)

3-6 November 2009

TABLE OF CONTENTS

1	BACKGROUND TO THE MISSION	4
1.1	Inscription history, Inscription criteria and World Heritage values.....	4
1.2	Integrity/authenticity issues raised in the IUCN and ICOMOS evaluation reports at time of inscription	5
1.3	Examination of the State of Conservation by the World Heritage Committee.....	6
1.4	Justification of the mission	6
2	NATIONAL POLICY FOR THE PRESERVATION AND MANAGEMENT OF THE WORLD HERITAGE PROPERTY	7
2.1	Protected area national and regional legislation	7
2.2	Institutional framework and management structure	7
2.3	Recognition under other international treaties and programmes	8
3	IDENTIFICATION AND ASSESSMENT OF ISSUES / THREATS	10
3.1	Positive developments in the conservation of the property since the last report to the World Heritage Committee.....	10
3.2	Management effectiveness regarding the property.....	10
3.3	Ibiza Port.....	12
3.4	Boundaries of the property.....	16
3.5	Presentation of the property.....	18
4	ASSESSMENT OF THE STATE OF CONSERVATION OF THE PROPERTY	20
5	CONCLUSIONS AND RECOMMENDATIONS	22
5.1	State of conservation	22
5.2	Management system and management planning	22
5.3	Harbour situation and Port Expansion Project	22
5.4	Boundaries and buffer zones	24
5.5	Presentation of the site	24
6	ANNEXES	26
	Annex I: Terms of reference.....	26
	Annex II: Itinerary and programme.....	28
	Annex III: Composition of mission team.....	30
	Annex IV: List and contact details of people met	31
	Annex V: Maps and harbour plans.....	35

ACKNOWLEDGEMENTS

The mission acknowledges gratefully the warm welcome of the authorities of the Balears, the local authorities of Ibiza and the port authorities of the Balears, as well as the national authorities in charge of the World Heritage Convention.

The mission appreciated the extensive information provided by these authorities in response to many questions raised. The mission also appreciatively acknowledges the time and availability of many local organizations, NGOs associations and civil society who shared their concerns and information with the mission team.

The mission expresses special thanks to the Ambassador of Spain to UNESCO, Ms María Jesús San Segundo, and to the Mayor of the City of Ibiza, Ms Lourdes Costa, for facilitating the work of the mission and to Ms Esther Rodríguez who accompanied the mission throughout its visit.

EXECUTIVE SUMMARY AND LIST OF RECOMMENDATIONS

Following information received by the World Heritage Centre concerning the extension of the port of Ibiza and consultation with the advisory bodies IUCN and ICOMOS, the state of conservation of the property of "Ibiza Biodiversity and Culture" was presented to the 33rd session of the World Heritage Committee (Seville, Spain, June 2009). The Committee decided (Decision **33 COM 7B.41**) to dispatch a reactive monitoring mission to the property. The State Party of Spain invited the joint World Heritage Centre-ICOMOS-IUCN reactive monitoring mission to review the port reorganization and expansion project, taking into account the Environmental Impact Assessment and to review the actual state of conservation of the property, its boundaries, values and conditions of integrity.

The mission took place from 3 to 6 November 2009 and the detailed recommendations of the mission can be found in section 5 of this report.

1 BACKGROUND TO THE MISSION

1.1 Inscription history, Inscription criteria and World Heritage values

In 1986 a nomination file for the historic city of “Dalt Vila” (Ibiza) was presented by the national authorities and evaluated by ICOMOS. The World Heritage Committee in 1987 did not inscribe the site and stated: “Although the Committee recognized the historic value of this site in the Balearic Islands, it considered that the material evidence of its multi-millennia past was not sufficient to justify inscription on the World Heritage List.”

In 1998 a new nomination file was submitted under the title “Ibiza, Biodiversity and Culture” which included the archaeological sites, the historic city “Dalt Vila” as well as the natural and marine area between Ibiza and Formentera.

The World Heritage property of the “Ibiza, Biodiversity and Culture” was inscribed on the World Heritage List in 1999 as a mixed site for both its cultural and natural values under criteria (ii), (iii), (iv), (ix) and (x) during the 23rd session of the World Heritage Committee¹.

The brief description of 1999 noted: Ibiza provides an excellent example of the interaction between the marine and coastal ecosystems. The dense meadows of oceanic Posidonia (sea grass), an important endemic species found only in the Mediterranean basin, contain and support a diversity of marine life. Ibiza preserves considerable evidence of its long history. The archaeological sites at Sa Caleta (settlement) and Puig des Molins (necropolis) testify to the important role played by the island in the Mediterranean economy in protohistory, particularly during the Phoenician-Carthaginian period. The fortified Upper Town (Alta Vila) is an outstanding example of Renaissance military architecture; it had a profound influence on the development of fortifications in the Spanish settlements of the New World.

The justification based on the evaluations by IUCN and ICOMOS was adopted by the Committee in 1999 as follows:

Criterion (ii): The intact 16th century fortifications of Ibiza bear unique witness to the military architecture and engineering and the aesthetics of the Renaissance. This Italian-Spanish model was very influential, especially in the construction and fortification of towns in the New World.

Criterion (iii): The Phoenician ruins of Sa Caleta and the Phoenician-Punic cemetery of Puig des Molins are exceptional evidence of urbanization and social life in the Phoenician colonies of the western Mediterranean. They constitute a unique resource, in terms of volume and importance, of material from the Phoenician and Carthaginian tombs.

Criterion (iv): The Upper Town of Ibiza is an excellent example of a fortified acropolis which preserves in an exceptional way in its walls and in its urban fabric successive imprints of the earliest Phoenicians settlements and the Arab and Catalan periods through to the Renaissance bastions. The long process of building the defensive

¹ The criteria were numbered differently at time of inscription.

walls has not destroyed the earlier phases or the street pattern, but has incorporated them in the ultimate phase.

Criterion (ix): The evolution of Ibiza's shoreline is one of the best examples of the influence of Posidonia on the interaction of coastal and marine ecosystems.

Criterion (x): The well-preserved Posidonia, threatened in most Mediterranean locations, contains and supports a diversity of marine life.

1.2 Integrity/authenticity issues raised in the IUCN and ICOMOS evaluation reports at time of inscription

For the natural part of the property IUCN noted in its evaluation report issues of governance following the process of devolution of power to the Council of the Balearic Islands, the existence of an extensive legal framework, the existence of a management plan for the Nature Reserve established in 1995, the presence of 10 permanent staff at the site, an annual budget of 4 million USD and several projects being implemented in the reserve, including the construction of a visitor centre. Concerning integrity issues IUCN reported a planned pipeline to discharge waters from a treatment plant from the urban areas in Ibiza, for which alternatives were being considered. European Commission (EC) approval for a project to expand the port of Ibiza was partially financed by the European Union (EU) Fund for Cohesion. IUCN therefore proposed to defer the nomination to review any potential impacts of this project on the integrity of the nominated site. Between the Bureau session in June 1999 and the December 1999 session of the World Heritage Committee IUCN reviewed the Environmental Impact Assessment (EIA) for the port expansion and recommended to inscribe the site as the mitigation measures proposed by EIA were satisfactory to IUCN experts for maintaining the integrity of the marine component of the property. At the same time it further recommended preparation of an extension of the property to include Cabrera Islands.

Concerning the cultural aspects of the property, ICOMOS evaluated the serial nomination of the cultural portion of the site, not physically connected to the natural part, consisting of the Upper Town, Alta Vila, the Phoenician Punic cemetery of Puig des Molins, the archaeological site of Sa Caleta, as well as elements located in the buffer zone (Es Soto, the irrigation systems of Ses Feixes and the Salinas salt production area). It noted that the protective measures of the areas of Ses Feixes prevent speculative development and that restoration programmes and management measures for the historic city enhanced integrity. It noted, however, that the "authenticity of the Upper Town is a more complex issue", as changes were made regularly to adapt to social needs. The urban structure was considered intact. ICOMOS further questioned why the cultural landscape of Ses Feixes and the ancient salt pans of Las Salinas were included in the buffer zone, if the object of the nomination was to emphasise the cultural diversity of Ibiza.

No proposals were made to change the perimeter or boundaries of the World Heritage nomination or its buffer zone to enhance its integrity or to enhance the linkages between the cultural and biological values within it at the time of its inscription.

Following additional information received between the Bureau of the World Heritage Committee in June 1999 and the World Heritage Committee further oral comments were provided by the Advisory Bodies to the 23rd session of the World Heritage Committee in Marrakesh in December 1999.

1.3 Examination of the State of Conservation by the World Heritage Committee

Since the time of inscription there were several communications to the UNESCO World Heritage Centre and the Advisory Bodies ICOMOS and IUCN, on actions and projects with potential impacts on both the cultural and natural components of this property. Also IUCN received in 2008 and 2009 information on concerns over the lack of coordination for the management of this site. The first state of conservation report on the site was presented to the 33rd session of the World Heritage Committee in 2009. Whilst indeed the issue of the port expansion was the key entry point for the reactive monitoring mission requested by the World Heritage Committee, a number of other issues were noted by the mission team, including protection, management and presentation of the World Heritage property.

Despite the request in paragraph 172 of the Operational Guidelines to States Parties to inform the Secretariat prior to any major projects which could impact on the outstanding universal value and integrity of the World Heritage property, the UNESCO World Heritage Centre was not informed of the 2001 port expansion of the construction of the Botafoc Dike, already mentioned in the IUCN evaluation and by the World Heritage Committee at the time of the inscription at its 23rd session in 1999.

Similarly, no official information was received concerning a further port reorganization and expansion which had been under consideration by the authorities of the Balearic Islands and the Port authorities. In 2008 the UNESCO World Heritage Centre received information from different organizations, NGOs and individuals and enquired via the Spanish authorities about this project. After consultation with ICOMOS and IUCN, and after receipt of information from the authorities, the matter was brought forward to the 33rd session of the World Heritage Committee (Seville, July 2009), which requested a joint World Heritage Centre-ICOMOS-IUCN reactive monitoring mission.

1.4 Justification of the mission

Following the World Heritage Committee's Decision **33 COM 7B.41** the State Party of Spain invited the joint reactive monitoring mission to review the port reorganization and expansion project, taking into account the Environmental Impact Assessment and to review the actual state of conservation of the property, its boundaries, values and conditions of integrity and authenticity.

The mission took place from 3 to 6 November 2009 and the Terms of Reference are included in ANNEX I. The programme and itinerary is enclosed as ANNEX II and the composition of the mission team as ANNEX III and the list of persons met as ANNEX IV.

2 NATIONAL POLICY FOR THE PRESERVATION AND MANAGEMENT OF THE WORLD HERITAGE PROPERTY

2.1 Protected area national and regional legislation

The natural property is protected by the following laws and legal provisions (See also maps in ANNEX V):

- Directive 79/409/CEE of 1979;
- Coastal zone law 22/1988;
- Law 42/2007, of 13 December 2007 on Natural Heritage and Biodiversity, which replaces the law 4/1989;
- Law 1/1991 of 30 January 1991 on the Natural Areas and the Urban Regime of the special protection areas of the Balearic Islands, which declares Ses Salinas as Natural Area of Special Interest (ANEI)
- Habitat Directive (92/43/CEE) of 1992;
- Declaration of Zone of Special Protection of Birds (ZEPA);
- Agreement of the Council of Ministers of 28 May 1993, which authorizes the inclusion of the Salinas into the list of wetlands of international importance of the Ramsar Convention (1971) ;
- Decree 63/1999 of 28 May 1999 on the Declaration of the Marine Reserve of Freus de Ibiza and Formentera;
- Law 17/2001 of 19 December 2001 on the Environmental Protection of Ses Salinas as Natural Park ;
- Management Plan concerning the natural resources of the Natural Park Ses Salinas of Ibiza and Formentera of 24 May 2002;
- Law 5/2005 of 26 May 2005 concerning the Conservation of spaces of environmental relevance (LECO);
- Decree 132/2005 of 23 December 2005 concerning the approval of the Directorate Plan on the Use and Management (PRUG) of the Natural Park of Ses Salinas;

Other protection measures, such as urban directives and general urban management plans, laws for mountain areas, forest fires, hunting regulations, regulations for professional and sport fishing and water regulations may also apply for the World Heritage areas.

Concerning the cultural heritage there are a number of documents related to the protection and planning of the property and its buffer zones, from the Decree of 1931 which declared the Puig des Molins a historical-artistic monument, to the recent amendment of the General Plan for Urban Organization, of 2009. All these legal and planning documents provide a framework for the protection, development and improvement of the individual properties.

2.2 Institutional framework and management structure

The responsible body for the implementation of the World Heritage Convention in Spain is the Spanish Ministry of Culture.

The management of the World Heritage property is under the “Consortio” created on 28 March 2001 which consists of representatives of the Government of the Balears, the Government of Ibiza, the Government of Formentera (since 2007), and the Mayor of the City of Ibiza.

Concerning the management of the natural part of the property, the coastal zones are under the jurisdiction of the national authorities, whereas the waters are under the jurisdiction of the Government of the Balearic Islands, including the nature park. In 2001 with law 17/2001 a “Patronate” (a joint management commission) was created for the natural park which is larger than the natural component of the World Heritage property, and which also covers the environmental protection of Ses Salines.

Concerning the management of the three cultural components of the serial property, the Municipality of Ibiza is responsible for the management of the Dalt Vila, the historic centre, whereas the national authorities are responsible for the archaeological areas and national monuments, that is the necropolis of Puig des Molins and the Sa Caleta archaeological site of the Phoenician settlement.

The area of the old city is protected at several levels, firstly under the General Plan of the City last revised on 1 September 2009. It includes a requirement to make special plans for each area. Special plans exist for Dalt Vila, La Marina and Saperia. The new revision requires special plans for the two wetland areas in the vicinity and buffer zone of the site: Prats de Vila and Prats de ses Monges. There is therefore a double protection at the level of the municipality and the level of the Government of the Balears for these sites of cultural interest (Bienes de Interés Cultural - BIC).

There is currently no overall management plan of the World Heritage property. Although there is a general management body, the Ibiza World Heritage Consortium, an integrated management programme is lacking.

There has been a lot of planning, conservation and restoration activity, mostly concentrated in the core area of Dalt Vila, and some improvement in the surrounding districts. The guidelines for these activities were set up by the Special Plan for the protection and interior reform (PEPRI) of Sa Penya – La Marina – Vara del Rey (1994) and by the PEPRI of Dalt Vila – Es Soto (1997). Both plans are currently being updated. The restoration and sustainable use of the fortifications is backed up by the detailed Master Plan for the Renaissance Walls of Ibiza, which received the Europa Nostra prize in 2004. On the other hand, the remaining cultural and natural components of this property have received little attention.

2.3 Recognition under other international treaties and programmes

Parts of the natural components of the property are included in areas designated under the *1971 Ramsar Convention*, specifically the Las Salinas Area in the North of the site. The natural component of the World Heritage property is included in the EU Natura 2000 Network (see map in ANNEX V).

Spain has ratified the *2001 UNESCO Convention on the Underwater Cultural Heritage* and implications for the port area and surrounding terrestrial and marine areas should therefore also be evaluated in terms of provisions for potential underwater cultural heritage, as there are several known archaeological sites and remains in the marine component and in the vicinity of the cultural portion of the World Heritage property.

The mission noted that, in addition, the *2003 Convention on the Safeguarding of the Intangible Cultural Heritage* could be considered for the rich cultural traditions and traditional knowledge systems of the Ibiza and Formentera Islands, some of which are linked to the cultural and natural values of the World Heritage property, such as the use of the dried Posidonia for roofs of traditional building and for the livestock in the past.

3 IDENTIFICATION AND ASSESSMENT OF ISSUES / THREATS

3.1 Positive developments in the conservation of the property since the last report to the World Heritage Committee

It is evident that the key species *Posidonia oceanica* is present in the natural portion of the property (see map in ANNEX IV). This was confirmed during the on-site visit on 6 November 2009. The area also benefited from an EU Life project which allowed identification of several sites acceptable for mooring. This project also helped to increase the awareness of users, tourists and local population about the natural values of the *Posidonia* meadows and the ecosystem services that they provide, including for local fishing outside the World Heritage area. Similarly, several activities identified in the management plan to enhance the conservation of the ecosystems and habitats, such as the protection of the sandy dunes against erosion or the elaboration of a map of the main habitats, have been carried out or are in progress.

Concerning natural heritage the mission welcomed the increase in staffing for the natural part of the site (currently 12) and the increase in protection status from that of nature reserve to a nature park and an enlargement of the restricted fishing zone. Due to the important links between natural and cultural heritage, the mission proposed the inclusion of the *Posidonia* barrier reef of the Bay of Talamanca, which is a Mediterranean natural monument, in the World Heritage property. The mission noted with satisfaction the monitoring of alien species in the natural part of the property is taking place and encouraged the authorities to continue and extend such monitoring.

Similarly for the cultural elements of the property, positive developments have taken place including quality restoration works, specifically relating to the walls (Europa Nostra Prize in 2006). The sustainable development of the old city for the visitors, including signage to the different portions of the serial cultural property, has improved. The awareness of local people about World Heritage has increased as documented by the statements of different associations meeting with the mission team. A direct consequence of the inscription is increased awareness concerning traditional agricultural areas in the buffer zones and vicinity of the World Heritage area and specifically in Ses Feixes. Several areas were declared "Bien de importancia cultural" (BIC), including Prat de ses Monges and Prat de Vila, which can be considered as a positive step for conservation of areas in the vicinity of the World Heritage property. Concerning cultural heritage, the mission noted the improvement obtained through the new use of the fortress as a Parador which will enhance access of local citizens and visitors to the site, and its preservation and use throughout the year.

3.2 Management effectiveness regarding the property

The mission stressed the importance of recognising that the property is a mixed one with strong links between the natural and cultural environment and that these links do not seem to be taken into account in the daily conservation and management of the property, including resources allocation for management activities, communication, presentation, interpretation, information exchange and tourism management.

The mission specifically noted that the protection and management of this mixed property lacks a joint vision and coherence, partly because of the situation of the site, which is a serial non-contiguous property with highly contrasting values in its different components, but partly because of the different levels of management by different political entities. This issue has been addressed effectively at other serial World Heritage properties and therefore the joint Management Commission must take leadership to provide for a more coherent effective management. Such management has to also include Risk Preparedness, including accidents (boat accidents such as the Don Pedro in 2003), pollution (oil and gas tanker anchoring in the buffer zone at Botafoc) and climate change effects at the marine and coastal zones.

The mission also noted that it seems there is no follow-up to the inscription of the property in terms of the exact location/delimitation of the natural components of the World Heritage property. There also seems to be no follow-up concerning the detailed identification and assessment of the state of conservation of these areas in order to improve their management and preservation.

Concerning the management of the natural components of the property, it was previously guided by the 1999 management plan noted in the IUCN evaluation, which was a territorial land use plan covering some of the existing protected areas. There was also a 1997 territorial plan generic for all the Balearic Islands, but this was more a set of principles to guide project development than a management plan as such. However, the mission noted that the adoption of a Management Plan (Decree 132/2005) took place in 2005. Therefore, the 1999 plan was superseded by the 2005 Management Plan, which is more complete and considers at least some of the aspects of the Outstanding Universal Value of the property, including the state of conservation of the key species *Posidonia* and conservation actions envisaged. It also identified the operational objectives and actions for the Natural Park of Ses Salines of Ibiza and Formentera, and this is an important step. Nevertheless, since 2007 the responsibility for managing the natural components of the property have been shared between the Ibiza and Formentera Councils, without a clear identification of the respective responsibilities and roles including, resources allocation, monitoring and follow-up.

The mission noted that an integrated management approach, which would address all aspects of the property, including the buffer zone, and establish clear objectives and priorities is not in place. Furthermore, the archaeological sites and the Feixes areas also require a plan which defines a vision over the mid- and long-term. Therefore priority should be given to the development and implementation of an integrated management programme which should include provisions for the improvement and management of the buffer zone.

The mission furthermore noted that effective use was not made of the World Heritage designation considering that the site is one of the key tourist destinations in Europe with approximately 5 million arrivals/per year, and 120,000 permanent inhabitants on Ibiza Island. The visitation peak occurs in the summer period of 2-3 months resulting in a huge pressure on the resources of the island, including the World Heritage areas. In addition to the airport, the port authorities play a major role in regulating maritime traffic and access to the World Heritage area with speed boats from the Spanish mainland directly into the World Heritage cultural properties as well as major boat traffic from Ibiza to Formentera into the natural World Heritage portion of the property. It would be advisable that better use is made of these access points including the provision of sensible World Heritage information on the boats, which is currently not the case. Advice could be provided though tourism specialists identified by UNESCO, ICOMOS and IUCN. Despite the high numbers, the visitors are not considered as a

threat by the mission if access to the World Heritage serial sites is well managed. The mission team considered that the diversification of tourism is required in particular if the port expansion attracts more cruise ships with 1,000 to 3,000 passengers and with the related bus traffic into the old city and the archaeological sites. Coordinated approaches would be beneficial for best visitor experiences and should include awareness raising about fragile environments and ecologically sound tourism behaviour (including best practice waste management, use of water resources etc.).

3.3 Ibiza Port

The mission was informed about the details of the port expansion project and the planned reorganisation of the port activities, and discussed the project with both the authorities and NGO and civil society representatives. The mission noted that all stakeholders agree that reorganization for safety and security reasons is needed to address the major physical impacts on the La Marina and Sopenia neighbourhoods, which include vibrations from ship motors, pollution and noise, both from large scale ships and embarking/ disembarking traffic, including lorries bringing cargo to the island. However some stakeholder groups do not agree with the detail of proposals as put forward. The mission also noted the considerable visual impacts of the large scale ships (cargo and passenger ferries, cruise ships) of considerable height, on both the Old City and its setting.

The mission was informed about five alternative proposals for the development of platforms and piers within the rearranged port. The mission was informed by representatives of the authorities that each of the options had been reviewed in detail and that Option A-5 was presented as the officially chosen one. At least one of the stakeholder groups does not agree that the selected option is the best choice in relation to the development. The mission was also informed that the Master Plan for the Infrastructure of the Port of Ibiza was approved in July 2006 and that the option chosen would encompass the construction of a large platform at the Botafoc area, originally intended to cover 69,000 m². The project appears to have been reduced in 2009 by 10,000 m² and includes at the current stage two piers of 200m length and 30m width. These piers would be constructed on pilotis to allow for the circulation of waters. A copy of the current plan is enclosed in ANNEX VI.

The mission reviewed the documentation and the actual situation on-site and concluded that the proposed construction would start in the buffer zone of the property and would continue into the port waters not located within the World Heritage property or its buffer zone. The mission remains concerned about a number of specific issues that could potentially impact the value and integrity of the property including the following:

- potential direct and indirect impacts on the natural portion of the World Heritage property of the dredging and the deposit of the dredged materials into the zona de vertido;
- potential loss of archaeological evidence from the Botafoc area, historically two islands facing the port and the city of Ibiza;
- the size of the platform proposed and whether such a size of structure is really required; and
- despite the provisions of the territorial plan there is a lack of a coordinated conceptual development of the harbour integrated with the overall urban and regional development, which should fully consider the need to maintain the values and integrity of this World Heritage property, including traffic management within Ibiza and Formentera.

Potential direct and impact impacts on natural values

The mission noted that in 2001 a dike was constructed as part of the port development. This feature, the Botafoc Dike (see section 1.2 on integrity issues at the time of the inscription), seems to have had some negative impacts on the natural component of the property. This issue was brought forward to the mission by the divers associations,, who suggested that the disposal of dredging material resulting from the construction of the Botafoc dike had caused 10-15 days of reduced visibility during the year of construction owing to increase in the water turbidity. Thus further port development may provide a similar risk. The development is also likely to have resulted in impacts and loss in relation to the Posidonia areas within the port and nearer to it than the natural component of the property.

Due to the lack of information on the status of the natural habitat at the time of the inscription, the mission considers that it is difficult to judge the significance of these impacts. The monitoring carried out during and following the construction of the Botafoc Dike appears not to have been designed to clearly identify threats on to the natural component of the World Heritage property (Posidonia meadows, Cladocora reefs) to be followed by immediate actions to avoid any impacts of the World Heritage property. It would have been desirable that a clear system of monitoring of the impacts of this development had been put in place, and it is essential that such a system is established in relation to any further developments, in relation to the natural values of the property.

Concerning the current port proposal, the mission noticed that the amount of the dredging material generated would be at least 3 times as much as the development undertaken in 2001. Therefore, concerns exist about potential negative impacts to the natural part of the World Heritage property. One of the most critical potential impacts is in relation to the dredging activities during the building of the platform and dikes and the dumping of dredged soil into the identified disposal area (the zona de vertido). This issue was discussed at length during several meetings with stakeholders as well as the EIA team. It should be noted that in addition to the World Heritage status, the legal status of Posidonia either as species (Spanish legislation, Bern Convention - Annex II, Barcelona Convention – Annex II of the Protocol concerning Specially Protected Areas and Biological Diversity) or as key-habitat (EC Habitat Directive) is such that any activity likely to threaten its conservation must be avoided. This applies to areas both within and outside the World Heritage property. The dispersion simulations of the dredged materials after immersion, presented in the Environmental Impact Assessment study, appear to confirm the possibility of impacts on Posidonia.

There is also a possibility for the dispersion of invasive species (*Caulerpa racemosa*) from the port area to the nature reserve, which constitutes the natural component of the World Heritage property. The information provided by the EIA team on the proposed response to this threat of identification and subsequent burning of each identified invasive plant seems unrealistic to the mission team, and a realistic response strategy should be considered.

The mission was also provided with a report by an NGO that had examined the results of monitoring related to the sinking of the *Don Pedro* between the natural and cultural components of the World Heritage property. The analysis of the monitoring results gathered following the sinking of the “Don Pedro” vessel showed sediment contamination by polycyclic aromatic hydrocarbons (PAH) resulting from the port. A similar risk of contamination exists in relation to the port construction and dredging

anticipated, and it will be important that a full analysis of the sediments is undertaken before they are disturbed, considering the potential to release pollutants that are currently bound up within them.

In terms of monitoring, it is recommended that the position of the lower limits of the *Posidonia oceanica* beds in the vicinity of the Island of Espardell be monitored in order to identify and analyze all changes and in particular any increase in water turbidity. This monitoring requires regular reporting during the works and afterwards at a minimum of 3 year intervals. The most critical moments would be during the discharge of the dredging material into the sea. According to the EIA it is planned to realize the immersion at calm seas without winds to avoid any potential impacts on the property and horizontal dispersion; vertical discharge into a limited area below 280m depth and under the thermocline (e.g. underwater pipeline) is required.

In addition to the above concerns, the increase of Port activities and the possibility to welcome large cruise ships could increase maritime traffic and visitation to the area and exceed the carrying capacity of the natural area.

Archaeological heritage values

Concerning the archaeological values, the mission noted that the construction area in the port could contain major finds and that the method proposed to review material on the boat on the way to the disposal place at the “zona de vertido” (located 23 km Southeast from the Port of Ibiza and 17km West from the Eastern boundary of the natural portion of the property) would not be the best option, either for archaeological finds or for the environment. The mission considered that there is an important link between potential archaeological finds, including those in the buffer zone or its vicinity, and the Outstanding Universal Value of the property, as the cultural portion of the World Heritage property is recognized for those archaeological values relating specifically to criterion (iii). This is reinforced by the archaeological finds associated with the 2001 dike construction, in shallower water, and where considerable evidence of Phoenician times emerged. The mission noted that the waters of the port area are outside of the property and its buffer zone, whereas the Botafoc area is included in the buffer zone of the cultural property.

New port development and archaeology

During the recent construction of the Botafoc breakwater, a rather crude method of archaeological treatment of the dredged material was applied. Apart from preliminary research carried out on potentially valuable larger structures (wrecks), using non-destructive techniques, archaeological investigation consisted of sieving the dredged material through a large mesh of 10x10 cm openings, before it was deposited in the deep sea. In such a way only one whole amphora and 160 pieces of pottery were found, and all the smaller-size material was lost.

The same methodology is planned for the archaeological investigation of the new port development, in the area between the former islands of Plana, Grossa and Botafoc, which are today connected with the mainland. It is an area of potential shipwrecks, but also an ancient land-reclamation area, where large quantities of pottery, stones and smaller-size archaeological material can be expected.

It is therefore strongly recommended that the Spanish archaeological authorities identify a more suitable option for the investigation of the dredged material. Spain has ratified the 2001 UNESCO Convention on the Protection of the Underwater Cultural Heritage, and should provide the best means of protection (in this case of investigation and documentation) of the underwater site within the port of Ibiza. The

location has strong connections with the inscribed property of the historic city of Dalt Vila, and the potential archaeological finds could be important for understanding the historical values of the property.

It should also be noted that the planned treatment of the dredged material (sieving and washing) to take place on the ship on the way to the discharge point. This has the potential to create pollution that would impact the natural part of the World Heritage property, and this aspect of the methodology also needs to be reconsidered.

Concerning archaeological heritage values, the mission recommends careful analysis of all dredging material during extraction and prior to the discharge in particular as this area was historically a passage way between two islands (Isla Plana and Isla Grossa);

Scale of the proposed development

The mission was concerned that the scale of the development was beyond acceptable limits. The total load capacity of the harbour (including the capacity of the service roads) should be assessed, together with the trends of growth/decrease in maritime traffic. It is recommended to re-examine alternative options for port development, and select those which are more rational and involving limited expansion. In these considerations the amount of dredged material produced is of great concern and must be reduced and/or re-used to ensure that direct and indirect impacts do not occur from the disturbance, transport and dumping of sediments, including the possible release of pollutants. The size of the proposed platform was also noted as a key issue to be reviewed.

Conceptual development and capacity of the harbour

The mission reviewed all available information concerning the port development and noted that the current **management of the harbour** is inadequate. The organization of the activities as currently carried out is detrimental to the integrity of the cultural heritage, specifically the old city and its links to the harbour; the most critical area is the marina area next to the World Heritage portion of the old city. This area suffers physical problems (noise pollution, vibrations from ship motors), and visual impacts as well as on the quality of life of the neighbourhood and citizens of Ibiza (barrier of the harbour, traffic jams, security issues) and the mission came to the following conclusions: the port expansion should be carefully assessed and balanced according to the realistic needs of the island, and not according to the size of the ships which happen to provide services to the island.

The mission reviewed the issues of safety, passenger and tourism flows in the port area and, as already noted above, recognizes the need for reorganization. The future use of the harbour area close to the historic centre (La Marina) should be better integrated with the everyday life. Some of the buildings on the waterfront could be used for such purposes. However, it is recommended that the fishing boats and local passenger traffic to Formentera should remain at the marina, where it was located traditionally and which thus maintains a link to the historic city.

General view of the possible impact on the cultural values of the site

The possible impact of the proposed port development on the cultural values of the World Heritage property is twofold. Apart from the potential destruction of the archaeological remains, there is also a visual aspect of the issue. There will certainly be a big change in the traditional view of the port from the castle area. The new

platform and piers will dramatically change the existing aspect, reducing the water surface in the harbour, and creating a big, flat area which will look quite unnatural compared to the current landscape, and will be attached to the tiny former islands of Plana, Grossa and Botafoc. On the other hand, it can be said that, during the past half century or so, the whole development of the harbour and the surrounding area has been a result of the extreme tourist pressure on the city and the island of Ibiza. The planned development would be just the last in the series of recent constructions in and around the port. The result of such policy has been the creation of a visual barrier between the two zones, and an almost total loss of the direct contact between the Old City and the green area surrounding the bay. It is therefore difficult to assess the new development as a critical threat to the integrity of the Old City.

Collateral effects are expected on the surrounding area, especially on the feixes of Prat de Ses Monges, with the construction of a new road or the widening of the existing one, needed for the much increased future traffic.

The mission considered that more effort needs to be put into conservation and presentation of Sa Caleta and Puig des Molins archaeological sites, as well as into improvements of the buffer zone. The Ses Feixes area of Prat de Vila and Prat de Ses Monges were declared an Asset of Cultural Interest (BIC) in 2003, and the General Plan for Urban Organization (revised 01-09-2009) requires a Special Plan for both areas. There is no doubt that the authorities are making an effort to protect these areas, but there is little evidence of physical improvement of the sites, which have been abandoned and neglected for several decades. The mission considered that the feixes areas could be considered as an extension of the currently inscribed property, but they would need to be provided with a buffer zone to protect them from encroachment of the surrounding built-up areas, and from damaging infrastructure development, such as the cutting of the road through Prat de Vila in 1970s. It is hoped that the Special Plan will result in an action programme to improve the situation of the Feixes areas, and a framework for appropriate future use and management.

The mission concluded that according to the information provided the construction itself seems to have no present major direct impacts on the cultural values for which the site has been included on the World Heritage List. However the mission draws the attention of the national and local authorities to a number of specific recommendations which should be implemented to reduce potential risk to these values

In conclusion, the mission team considers that reorganization of the port is necessary and that environmental and other impacts associated to it must be reduced to an absolute minimum through proper mitigation measures, environmental management and control. This requires effective coordination between the different site entities including proper communication between Ibiza and Formentera Councils. Full transparency of all processes involving local and regional stakeholders is recommended, with enhanced consultation with all the users and the public in general. For any structures to be built in the port area, the visual integrity and landscape setting of the World Heritage property also needs to be taken into account.

3.4 Boundaries of the property

It appears to the mission that some of the issues regarding the project for the development of the Port of Ibiza are caused by the definition of the boundaries of the inscribed property and of the buffer zone. The mission notes that boundaries agreed

at the time of the nomination have yet to be clearly demarcated on the ground and in the marine areas through buoys or positioning systems and all institutions and experts dealing with the management of this property have to be made fully aware of its boundaries.

The mission furthermore recommends the authorities to consider revising the boundaries of the property and its buffer zone, in order to exert better control over the territory where most of the future development can be expected. There is little opportunity for new construction within the inscribed property and most of the effort should be put into conservation, restoration and improvement of the buildings and the setting. Within the buffer zone new construction is possible, but should be strictly controlled, especially if it has a major visual or other impact on the core area. Any revision of the boundaries of the property should enhance the values, integrity and authenticity of the World Heritage property.

Boundaries of the inscribed serial property

It is recommended that the boundaries of the Dalt Villa be extended, especially to the south, to encompass the area of Es Soto between the fortification walls and the sea. That area should not be developed, so the emblematic view from the sea of the fortified old city is preserved. The inclusion of the Es Soto area within the inscribed property is also justified by its historical and archaeological interest, because of which it was included in the protected area together with Dalt Vila when it was proclaimed a Historic and Artistic District in 1969. In the Es Soto area planned for inclusion, no new construction should be permitted, and it is advised that a strict control over planning and maintenance is implemented, e.g. the consolidation works of the eroded cliffs currently being carried out.

The Ses Feixes areas of Prat de Vila and Prat de Ses Monges should be included in the inscribed property, as they have great value in their own right – not only are they testimony of the ingenious Arabic system land cultivation, but they represent the best evidence of the mixed cultural and natural values of the inscribed property. The wetland system of the Ses Feixes has an important relationship with the *Posidonia oceanica* meadows. The *Posidonia* meadow systems play an important role to protect the shoreline against erosion and allow the stabilisation of the sandy seabed. In the same way wetlands play an important role as natural system to maintain water quality on the coastal zone. So the conservation in good health of the both ecosystem is of great interest. .

In relation to natural values, the mission noted the particular importance of the Talamanca *Posidonia* barrier reef. Such features are rare at the Mediterranean level, and are considered as natural monument in the framework of the Barcelona convention (Marine vegetation action Plan). So, considering the importance of *Posidonia* in relation to the Outstanding Universal Value of the property, this area would be a priority for inclusion in an extension of the property. A case could also be made to include other areas of *Posidonia* in a revised boundary to enhance the overall integrity of the property.

Boundaries of the buffer zone

Currently the buffer zone includes the narrow stretch of land along the coastline around the harbour, without some of the structures recently built in the water. The harbour has an important historical value, being one of the reasons for the foundation of the city of Ibiza on this location, and should therefore be included in the buffer zone, together with the water surface and everything that has been built in and around the harbour area. In principle, any development in the harbour has the

potential to have a direct impact on the preservation of the values of the Old City and of the property as a whole.

The area around the harbour has undergone a massive development in past decades, following the rapid tourist boom, and there is very little open space left. The general view of the harbour from Dalt Vila has dramatically changed. Nevertheless, the area can still be improved, and especially in terms of enhancing the relationship with the Old City across the bay. Not only can the relationship of the pedestrian area with the waterfront with the harbour be enhanced (now greatly impaired by the fences and some of the portuary infrastructure), but also it is important to improve the views of the Old City from the areas around the harbour

The creation of a buffer zone for the natural component of the property would also have the potential to enhance its integrity and should be considered.

3.5 Presentation of the property

The mission was briefly informed about the project for a Visitor Centre at the San Francisco Eremita, which appears in the Management Plan of 2005. However the mission deeply regrets that this project, already planned at the time of the nomination, has so far not been carried out. Its realization would allow communication of the global importance of the natural property and the connection between the natural part of the property (wetlands, dunes and coastal ecosystems) and the cultural part and its traditions (salt exploitation).

Most of the effort to present and interpret the sites to the visitors can be seen in the Old City. Several places provide well-suited information on the history of the place. The Information Centre of Madina Yabisa offers a display of historic layers of architecture within the building itself, and a series of audio-visual displays explaining the history of the city. The Archaeological Museum displays objects found in excavations, which describe the island's history, in the premises which have been well restored and present in themselves a valuable part of the historic fabric of the city (the old University building, the Savior's chapel, and the bastion of Sta Tecla). In the Diocesan Museum within the Cathedral complex a collection of sacral works of art is displayed. In the cloister of the former Dominican monastery – today's City Hall – a series of posters is displayed with information on the values of the World Heritage property, and on the various conservation and restoration works carried out in the recent period. It is the only place where information can be obtained on the whole of the World Heritage property, although it is far from satisfactory. In other words, the UNESCO World Heritage property of Ibiza - Biodiversity and Culture deserves a proper visitor centre with substantial information on all aspects of this complex mixed property. Other museum places in the Old City include the Museo Puget with a fine collection of two local painters, set in a excellently restored gothic building, and the Museum of Contemporary Art, organized in the old Armory, which is currently undergoing a substantial restoration. Parts of the Renaissance fortifications have been organized to accommodate small museological presentations about the construction and use of the building, concentrating on the importance of the military technology in the modern history.

The Monographic Museum of Puig des Molins was built in 1966 on the site of the antique Punic cemetery, over that part of the locality, which had already been destroyed by the quarrying activity. The Museum is currently undergoing restoration, and only a small part of the collection is on display. There is little explanation on the site itself of the tombs, and their complicated history of the original use and later reuses. The lack of information is being compensated by the great effort of the museum staff who takes groups of visitors, and children in particular, on guided tours around the site, with special emphasis on the few hypogea open to the public.

On the site of the Punic settlement of Sa Caleta there is a need for explanation panels and, preferably, a small visitors' centre. The same can be said for the Ses Salines area, where there are no organized visits to the salt pans. It seems that there is a lack of synergy between the owner, the Ibiza World Heritage Consortium and the tourist organizations. Nevertheless, we were informed of the a visitors' centre being planned in the church of San Francisco des Ses Salines, near the entrance into the area.

It is hoped that following the efforts to organize the Special Plan for Ses Feixes, the areas of Prat de Vila and Prat de Ses Monges will be better interpreted and presented to visitors. There is enough know-how to give a clear picture of the exceptional values of the site among with local experts, who have published a thorough historic and in situ investigation.

4 ASSESSMENT OF THE STATE OF CONSERVATION OF THE PROPERTY

The mission considered that the World Heritage property is currently not under ascertained threats, but that its management, interpretation and presentation should be improved. However, if the concerns indicated above are not addressed effectively potential threats to the World Heritage property could emerge.

As pointed out in section 3.4 the mission considers the current overall state of conservation of the property is satisfactory, in relation to the values recognised at the time of inscription. However it is important to note that the lack of an effective monitoring system of the marine component of the property makes it impossible to objectively assess its conservation status. Moreover, potential threats may arise with the port construction if carried out as planned.

Cultural values

The conservation and restoration of Dalt Vila is directed by the guidelines set up in the planning documents (PEPRI, Master Plan for the fortifications, and other more detailed plans). A series of interventions have been carried out, ranging from large projects of improvement of the infrastructure (burying the pipes and cables under the repaved streets) to interventions on individual buildings, from the public and monumental, such as the cathedral, to the more humble domestic architecture. Parts of the fortifications have been restored, and in some places they were musealized. Some archaeological remains of the medieval and antique periods have been restored and presented to the public. The citadel (El Castell) long neglected. In the early 1970's passed from military use into the ownership of the City, and is now undergoing a serious restoration, following a detailed plan for the adaptation into a combination of cultural, museum, and tourist uses, with a Parador hotel. It can be said that the quality of the overall approach, based on the detailed documentation and assessment viewed, guarantees the preservation of the authentic values of the site.

On the other hand, a few particularly unorthodox interventions stand out from the otherwise high quality routine conservation work (for example, the change of aspect of the top storey of the Can Bottin; the ostentatious concrete staircase leading into the Castle area).

There have also been more interventions in the area adjoining the Old City to the north and northwest.

At the two archaeological sites of Puig des Molins and Sa Caleta not much conservation and presentation has been carried out in recent years. The two sites have been fenced from the surrounding areas. At the Puig des Molins necropolis, most of the exposed area was excavated many years ago, few of the hypogea tombs are open to public, and the greatest part of the cemetery is still unexcavated. The site of Sa Caleta, far away from inhabited areas, has not been well presented to the public, and it seems to be under the pressure of the tourists using the surrounding beaches.

The two Feixes areas have been neglected and abandoned during the past decades. There is some physical protection offered by crude fences, and the sites are prone to encroachment from the surrounding parts of the city.

The mission notes with concern that there is no effective means to contain and control the spread of these species and to reduce their impacts on the indigenous habitats.

The cultural portion of the property as inscribed has, until now, maintained its authenticity. Authenticity could be further enhanced with proper display of the archaeological finds and explanations of the values for which the property was inscribed. The project of the Parador in the Fortifications is an excellent way to enhance site interpretation and presentation and to ensure public access to key features of the site.

The City Council of Ibiza must however ensure the continuity of the landscape setting by including Ses Feixes within the World Heritage property. This would involve proper control of urban development, including scale, height, volumes and quality architectural solutions, which is so far not the case for certain areas. The traffic concepts should also be reviewed in order to identify ecologically sound solutions to reduce pollution, vibration and noise impacts.

Natural values

The mission observed that since the inscription an effort has been made to enhance the integrity of the natural part of the property with the adoption of a Management Plan of the Natural Park of Ses Salines of Ibiza and Formentera, which identify several specific management objectives. Among the activities initiated, the following should be mentioned:

- the realisation of a map of the distribution of the main habitats, that could be extended to all the habitats and the natural World Heritage area;
- the implementation of a mooring system, realised in the framework of a Life Project that allows reduction of the impact of anchoring on the Posidonia meadows and on shallower bottoms
- the protection of some sandy dunes against erosion
- the monitoring of the distribution of invasive species (*Lophocladia lallemandii*, *Acrothamnion preisii*, *Womersleyella setacea*);

The project of reorganization of the Port could generate several direct and indirect impacts on the property especially during the building phase as outlined in the EIA:

- An increase of the water turbidity ;
- An increase of contaminants trapped in sediments ;
- An acceleration of the natural release of *Caulerpa racemosa* which is present in the port area, but seems still absent from the natural heritage area of the World Heritage property ;
- A dispersion of the fine particles during the transport of dredging material to the site of disposal and especially during the releasing phase and a geographical dispersion of the dredged material, that with regard to the depth and the amount of materials may affect a large area.

After the building phase, the considerable increase of the port capacity (major cruise ships as well as container traffic) could increase the risks linked to maritime traffic (for example accidental collisions, pollution) but also pressures on natural areas (over visitation to some sensitive areas).

5 CONCLUSIONS AND RECOMMENDATIONS

The joint reactive monitoring mission, which took place from 3 to 6 November 2009, came to the following conclusions after review of the documents provided as well as on-site visits and meetings with key stakeholders.

5.1 State of conservation

With the information available the mission concluded that the current overall state of conservation is satisfactory; however a number of observations and recommendations below have been made, specifically to better manage potential threats to the outstanding universal value and integrity and authenticity of this cultural and natural serial World Heritage property. The site is currently not under sufficient overall threat to require consideration by the World Heritage Committee for inscription on the List of World Heritage in Danger. However the many issues noted in this report have the potential to have negative effects on the outstanding universal value, authenticity and integrity of this site and require urgent and immediate attention by the Spanish authorities.

5.2 Management system and management planning

The overall management of this mixed World Heritage property should be better balanced and coordinated, giving adequate attention to all components of the serial site

The mission noted that in 1999 a management plan was prepared for the natural site and that this was adopted in 2005. Concerning a coherent management system and framework, the links between the cultural heritage and the natural heritage need to be further explored. Currently no links exist and the delineation of the property does not facilitate the links between the different portions. The mission recommends that the management body established in 2001 enhances coordination on the protection and management of the natural and cultural portions and establishes more effective integrated management of the property.

Recommendation 1: The mission recommends that the roles and responsibilities of the different entities responsible for the planning, protection and management of the property, and especially its natural components, be clarified in relation to the overall integrated management of the property and its buffer zone as a whole, and that a shared vision and clear programme of joint actions be established and implemented.

5.3 Harbour situation and Port Expansion Project

The mission recognises the need for a reorganization of the port, considering international and EU safety requirements and the integrity of the landscape setting. Reorganization could reduce traffic impacts and visual impacts on the Old City. The mission also noted that the waters of the port area are outside of the property and its buffer zone, whereas the Botafoc area is included in the buffer zone of the cultural property.

The mission however is concerned about a number of specific issues including:

- potential direct and indirect impacts on the natural portion of the World Heritage property through effects of the dredging and then the immersion of the dredged materials into the zona de vertido;
- potential loss of archaeological evidence from the Botafoch area, historically two islands facing the port and the city of Ibiza;
- the size of the platform and justification for its size;
- a lack of conceptual development of the harbour with the overall urban and regional development and traffic concepts for Ibiza and Formentera despite the existence of a territorial plan;

Recommendation 2:

The mission therefore recommends that:

- **the proposed port development be carefully reviewed and reconsidered, taking into account the concerns above, and in particular to ensure no negative direct or indirect impacts on the natural aspects of the Outstanding Universal Value and integrity of the property, and in particular to the key species associated with the Posidonia meadows;**
- **all port activities should conserve and carefully examine using the latest techniques archaeological finds which could be relevant to understanding the history of the property and its Outstanding Universal Value;**
- **any potential visual impacts of constructions in the port area, including height of buildings, form and materials used, be reviewed in order to prevent any negative visual impacts on the city which might affect the outstanding universal value of the property and the wetlands in the buffer zone and vicinity of the site (this would also include preventing light pollution impacting the night views on the city and natural habitats);**
- **undertake a carrying capacity study for the World Heritage property, which should be considered within the overall re-organization plan of the port;**
- **carefully assessing all potential archaeological finds which could be relevant for the understanding of history of the site and its outstanding universal value using the latest techniques and preventive archaeology including testing;**
- **reducing the amount of dredged materials with a possible reduction of the platform, and the re-use of these materials within the platform;**
- **investigating all technical processes to avoid the dispersion of the mud not only inside the Port (geotextile barrier) but during the immersion including ensuring no wind and no-current conditions, no immersion in surface, use of pipelines for a deposition at depth (at least under the thermo cline and preferably as deep as possible) in order to reduce the amount of deposition on the deep-bottom;**
- **verifying and controlling regularly the quality of the dredged material before re-immersion, and halting deposition in case of punctual contamination by trace-metals or permanent organic pollutants;**
- **controlling during all building phases the distribution of the dredged material in the vicinity of the “zona di vertido” and on the borders of the natural site with sediments traps;**
- **implementing an adapted monitoring system for the natural resources (species and habitats) which have motivated the nomination of the site, with a particular focus on the stability of the lower limits of the Posidonia meadows that could be impacted, on the percentage of necrosis of the Cladocora reefs, on the distribution of allochthonous species;**

- that any works be carried out with extreme caution taking into account the concerns expressed above and to avoid impacts on the natural values and the key species as Posidonia;

Recommendation 3: Given the potential negative impacts of the proposed new port development on archaeological resources, and potentially on the ecosystem of the harbour, and wider area, the mission urges the Spanish authorities to adopt an alternative approach which would reduce these impacts to acceptable levels.

5.4 Boundaries and buffer zones

Considering the evaluation of 1999 and the actual situation, the mission recommended that the Prat de Vila be included in a potential future extension of the buffer zone, and noted that the Prat de ses Monges is already included in the buffer zone. Furthermore, taking into account the importance of the Posidonia Barrier Reef in the Talamanca Bay the mission recommended including it in a future potential extension of the property.

The mission considers that the buffer zone should be extended to include the port area and surrounding neighbourhoods to enable a better control of future developments. The landscape setting of the fortress is an integral part of the fortress structure and therefore the mission considers that the sea fronting part should be included, in particular as it is already protected. The green spaces around the site and within the buffer zone should be preserved and managed in the future, in particular those areas facing the historic city and that; this should be taken into account in the traffic development.

Recommendation 4: The mission recommends that the Posidonia barrier reef of the Bay of Talamanca should be considered for a future extension of the property and the boundaries of the Dalt Villa should be also re-considered, to include the area of Es Soto between the fortification walls and the sea.

Recommendation 5: The mission recommends that the buffer zone be enlarged in order to include the area of the water within the line that connects Punta des Andreus with Punta des Bol des Seclet on Illa Grossa (Bay of Talamanca), and the line between Illa Botafoc, Illa Negra and the south point of the Es Soto area (harbour of Ibiza). The same is true for the Bay of Talamanca, which is unquestionably closely connected to the Feixes of Ses Monges.

It is also recommended that the buffer zone be extended around the harbour to enable more effective control of further development that could impact the inscribed property, and that buffer arrangements for the natural component of the property are established.

5.5 Presentation of the site

The mission noted that the presentation of the property should be strengthened, as at the entrance to the property only the cultural values of the historic city are being promoted with specific panels focus on the role of the property as a part of the World Heritage city network and not as a mixed World Heritage property with important natural values. It is therefore recommended that the values of the property be highlighted as inscribed and to diversify the tourism flows by addressing other areas of the inscription including the Ses Salinas.

Recommendation 6: The mission recommends the authorities to complete the project for the Visitor Centre at San Francisco Eremita as soon as possible.

Recommendation 7: Concerning the area of Ses Feixes, the mission recommends to improve the site presentation with panels and explanation on the connection between the natural and cultural parts of the property and to consider protecting against mooring on the Posidonia barrier reef of Talamanca Bay, even if this area is not included in the site.

6 ANNEXES

Annex I

Terms of Reference for a joint UNESCO/IUCN/ICOMOS Reactive Monitoring mission to the Ibiza Biodiversity and Culture World Heritage property, Spain 3-6 November 2009

Objective of the mission

The objective of the monitoring mission is to undertake a balanced and objective assessment of the State of Conservation of the Ibiza Biodiversity and Culture property as requested by the World Heritage Committee at its 33rd session (Decision **33 COM 7B.41**). In particular, the mission will assess the potential direct and cumulative impacts of the proposed port expansion on the natural values at the marine component of the property and its Posidonia sea grass habitat, as well as on the cultural attributes, such as the fortified Upper Town (Alta Vila) and its setting. The mission will also develop recommendations on actions to be undertaken by the State Party to address existing, and any potential threats, and improve the long-term conservation and management of the property.

Terms of reference

The mission will:

- (i) Assess the state of conservation of the World Heritage property of Ibiza Biodiversity and Culture (Spain) and any factors affecting, or that can potentially affect, its Outstanding Universal Value and conditions of integrity, particularly in relation to the threats identified in the 2009 state of conservation report and related World Heritage Committee Decision (33 COM 7B.41), and with reference to the decision of World Heritage Committee at its 23rd session to inscribe the property on the World Heritage List. In particular, the mission should:
 - Clarify the status of the port expansion planning application and of any ongoing construction works such as dredging;
 - Evaluate the potential direct, indirect and cumulative impacts of the proposed expansion on the natural values and integrity of the property and the Posidonia prairie habitat, and on the cultural attributes such as the fortified Upper Town (Alta Vila) and its setting; and
 - Determine the level of land-based pollution from the Port of Ibiza and its existing, potential or ascertained impact on the Posidonia prairies.
- (ii) Hold consultations with the Spanish authorities and relevant stakeholders, including organizations, NGOs and local individuals which have raised concerns with the World Heritage Centre, during the assessment of the potential and / or ascertained threats described in (i) and with particular reference to the official reports and Environmental Impact Assessment (EIA) submitted to the World Heritage Centre by the State Party. The State Party is requested to make appropriate arrangements for these consultations to take place.
- (iii) Provide an independent quality-review of the Environmental Impact Assessment of the port expansion project, and advise the Spanish authorities on the accuracy and reliability of the EIA's conclusions and recommendations.

In particular, the mission should consider whether the EIA adequately identifies, describes and evaluates:

- Impacts of the proposed port expansion on the Outstanding Universal Value, integrity and authenticity of the property. This should include the direct, indirect and cumulative effects on the Posidonia sea grass habitat, including, but not limited to, the discharge of dredging material containing an invasive marine algae. It should also include consideration of how investment in maritime traffic based on increased port facilities will impact on the marine component of the property over the long-term;
 - Possible identification of adequate mitigation and / or compensation measures that fully address the impacts of the proposed expansion on the property's Outstanding Universal Value, integrity and authenticity; and
 - Alternative options to significant port expansion.
- (iv) Clarify whether an appropriate assessment, required under the EU Habitats Directive, was carried out alongside the EIA of the proposed port expansion.
- (v) Clarify whether the port expansion project is part of the Special Plan for Infrastructure Development of the Port of Ibiza. In particular, determine whether the court verdict in favor of the College of Architects of the Balearic Islands' objection to the project still stands.
- (vi) Clarify with the Spanish authorities how the nature of the property, its boundaries and the institutional and legal setting requirements to maintain its values and integrity is currently reflected in the management of the site.
- (vii) On the basis of the mission's findings, make recommendations to the Government of Spain, the Government of the Balearic Islands, the Government of Formentera and the World Heritage Committee on:
- The potential direct, indirect and cumulative impacts of the proposed port expansion on the Outstanding Universal Value and integrity of the property;
 - Whether there are feasible mitigation measures that could address the impacts of the proposed port expansion.
 - The assessment and monitoring framework required for considering current and potential future impacts on the Outstanding Universal Value, integrity and authenticity of the property.
 - The need for, and the scope of, a management plan to guide the conservation and management of the marine portion of the property, including how to address issues of maritime traffic and land-based sources of pollution.
- (viii) Prepare a concise joint mission report in French on the findings and recommendations of the monitoring mission by 15 December 2009 not exceeding 10 pages and according to the adopted mission report format. The report should outline recommendations for consideration by the World Heritage Committee including, corrective measures needed to conserve the property's Outstanding Universal Value integrity and authenticity.

Annex II

Joint World Heritage Centre / ICOMOS / IUCN Reactive Monitoring Mission to the mixed World Heritage property *Ibiza, Biodiversidad y Cultura (Spain)*

PROGRAMME

4-6 November 2009

Wednesday, 4th November

9.00 h. Welcome: Major of Eivissa, representative of the Ministry of Culture.
Town hall of Eivissa (Can Botino).

9.15 h. Presentation of the site: elements included in the declaration, legal and management system.

9.45. Meeting with the Municipality of Ibiza: Relationship port-city and impact of the port infrastructures on the World Heritage property

11.00 h. Coffee-break

11.30 h. Visit to the port facilities from the wall (old dike) to the Botafoc dike, through the North quay.

13.30 h. Lunch (*Hostal La Marina*)

15.30 h. Presentation of the project by the Port Authority of Baleares
Offices of the Port Authority of Baleares

17.30 h. Meeting with organizations which have raised concerns about the realignment of the port:

- GEN-GOB
- Institut d'Estudis Eivissencs
- Eivissa pel Canvi
- Ecologistas en Acci3n / Greenpeace

Town hall of Ibiza (Can Botino).

19. 30 h. Meeting with the residents' association and traders of the old city

21.30 h. Dinner (*Hostal Talamanca*)

Thursday 5th November.

9.00 h. Meeting with representatives of the Government of Balearic Islands: President of the Government and experts from the regional Departments of Environment and Fishing.

Offices of the Council of Ibiza

11.00 h. Meeting with representatives of the Ministry of Environment and the Port Authority: Environmental Impact Assessment of the project.

Offices of the Council of Ibiza

13.00 h. Visit by boat to the external area of the port and the point of spilling. Lunch on board.

19.00 h. Meeting with the President of the College of Architects and with the President of the College of Quantity Surveyors

Offices of the College of Quantity Surveyors. Avda Ignaci Wallis.

21.00 h. Dinner (*Can Bof Restaurant*)

Friday, 6th November.

9.30 h. Meeting with the President of the Council of Ibiza and the President of the Council of Formentera

Offices of the Council of Ibiza

11.30 h. Meeting with the Nautical Club and the Association of Fishers

Offices of the Council of Ibiza

12.30 h. Meeting with key Diver's Operators

Offices of the Council of Ibiza

13.30 h. Lunch (*La Brasa Restaurant*)

16.00 h. Technical meeting
Townhall of Ibiza

17.30 h. Final institutional meeting (Ministry of Culture, Government of Balearic Islands, Council of Ibiza, Council of Formentera and Port Authority of Balearics)

Annex III

Composition of the mission team:

Dr Mechtild Rossler (Head of Mission)
Chief, Europe and North America
UNESCO World Heritage Centre

Mr Goran Niksic (Croatia)
Expert in cultural heritage
Representative of ICOMOS International

Ms Christine Pergent Martini (France/Corsica)
Expert in natural heritage
Representative of IUCN International

Annex IV

List and contact details of people met

Wednesday, 4th November

9.15 h. Presentation of the site: elements included in the declaration, legal and management system. Relationship port-city and impact of the port infrastructures on the World Heritage property

Lurdes Costa, Alcaldesa de Ibiza

Virtudes Marí, portavoz de la oposición municipal

Vicent Ferrer, teniente de alcalde

Marc Costa, concejal de Patrimonio

Rosa Gurrea, técnico de Patrimonio del Ayuntamiento

Esther Rodríguez, Consejera Técnica de la Subdirección General de Protección del Patrimonio Histórico (Ministerio de Cultura). ester.rodriquez@mcu.es

15.30 h. Presentation of the project by the Port Authority of Baleares (Offices of the Port Authority of Baleares)

Esther Rodríguez

Lurdes Costa

Marc Costa

Francesc Triay (Presidente de la Autoridad Portuaria -APB-)

Ángel Matías (Director de la APB)

Joaquín Jiménez (Técnico y Responsable en Ibiza de la APB)

17.30 h. Meeting with organizations which have raised concerns about the realignment of the port:

17.30 GEN-GOB – Greenpeace

18.15 Institut d'Estudis Eivissencs

19.00 - Eivissa pel Canvi.

19.30 h. Meeting with the residents' association and traders of the old city

Thursday 5th November.

9.00 h. Meeting with representatives of the Government of Balearic Islands: President of the Government and experts from the regional Departments of Environment and Fishing.

Francesco Antich, Presidente de las Islas Baleares

Ángeles Albert de León, Directora General de Bellas Artes y Bienes Culturales.

Esther Rodríguez García, Consejera Técnica de la SG Protección del Patrimonio Histórico

Lurdes Costa, Alcaldesa de Ibiza

Antoni McGrau, Jefe de Servicio de Recursos Marinos, Dirección General de Pesca del Gobierno balear. agrau@dgpesce.caib.es

Joan Mayol, Jefe de Servicio de Protección de Especies. Consejería de Medio Ambiente del gobierno balear. jmayol@dgpesce.caib.es

11.30 h. Meeting with representatives of the Ministry of Environment and the Port Authority: Environmental Impact Assessment of the project (Offices of the Council of Ibiza)

Name	Function
Esther Rodriguez	Ministry of Culture
Joaquin Jimenez	Autoridad Portuaria de Baleares
Mechtild Rossler	UNESCO
Christine Pergent-Martini	IUCN
Laura Mesanza	Interpreter
Goran Niksic	ICOMOS
Angels Albert	Ministry of Culture
Lourdes Costa	Mayor of Ibiza
Francesc Triay	President of the Balearic Port Authorities
Angel Matias	Technical Director of the Balearic Port Authorities
Pilar Muela	Técnico del Ministerio de Medio Ambiente, Gobierno de España
Antonio Zulueta	Consultor Ambiental antonio.zulueta@gmail.com
Ignacio Berenguer	HIDTMA, S.L., General Manager
Paz Hernandez Venero	Técnica de Urbanismo y Medio Ambiente, Ayuntamiento de Ibiza

19.00 h. Meeting with the President of the College of Architects and with the President of the College of Quantity Surveyors (Offices of the College of Quantity Surveyors. Avda Ignaci Wallis)

Name	Function
Vincent Serra Ribas	Presidente del Colegio Oficial de Arquitectos Técnicos Aparejadores, Ingenieros de Edificación de Ibiza y Formentera
Victor Beltran Roia	Presidente del Colegio de Arquitectos de Ibiza y Formentera

Friday, 6th November.

9.30 h. Meeting with the President of the Council of Ibiza and the President of the Council of Formentera (Offices of the Council of Ibiza)

Name	Function
Esther Rodriguez	Ministry of Culture
Mechtild Rossler	UNESCO
Christine Pergent-Martini	IUCN
Goran Niksic	ICOMOS
Albert Prats Rodriguez	Consejero de Movilidad y Medio Ambiente de Ibiza
Margalida Torres Plariells	Consejera de Patrimonio y Agricultura de Ibiza
Sonia Corbna Ferrer	Vicepresidenta Primera del Consejo Insular de Formentera, Consejera de Patrimonio

Josep Mayans Costa	Consejero de Turismo, Comercio y Movilidad, Consejo Insular de Formentera
Silvia Tur Ribas	Consejera de Medio Ambiente de Formentera
Manu San Felix	Biólogo Marino
Jaume Estarrllas	Biólogo, técnico de biodiversidad, Consejo insular de Ibiza
Laura Mesanza Caballero	Interpreter
Xico Torres	Presidente del Consejo insular de Ibiza

11.30 h. Meeting with the Nautical Club and the Association of Fishers (Offices of the Council of Ibiza)

Name	Function
Esther Rodriguez	Ministry of Culture
Jaime Serra	Comodoro Club Náutico de Ibiza jsr@atlantlelvent.com
Pere Vilas Gil	Director Club Náutico de Ibiza pvilas@eresmas.net
Vicente Ferrer	Ayuntamiento de Ibiza
Paz Hernandez Venero	Técnica de Urbanismo y Medio Ambiente, Ayuntamiento de Ibiza

12.30 h. Meeting with Diver's Operators (Offices of the Council of Ibiza)

Name	Function
Jaume Torres Roig	Presidente Asociación de los Centros de Buceo de Ibiza y Formentera anfibios@anfibios.com

16.00 h. Technical meeting

Name	Function
Esther Rodriguez	Ministry of Culture
Joaquin Jimenez	Autoridad Portuaria de Baleares jjimenez@portsdebalears.com
Angel Matias Mateos	Technical Director of the Balearic Port Authorities
Antonio Zulueta	Consultor Ambiental antonio.zulueta@gmail.com
Ignacio Berenguer	HIDTMA, S.L., General Manager iberenguer@hidtma.com
Paz Hernandez	Ayuntamiento de Ibiza pazherve@telefonica.net
Antoni McGrau	Jefe de Servicio de Recursos Marinos, D.G. Pesca, Gobierno balear agrau@dgpesce.caib.es
Joan Mayol	Jefe de Servicio de Protección de Especies, Consejería de Medio Ambiente jmayol@dgpesce.caib.es
Jaume Estarrllas	Biologo técnico de biodiversidad, Consejo insular de Ibiza jestarrllas@cief.es
Rosa Gurrea	Ayuntamiento de Ibiza

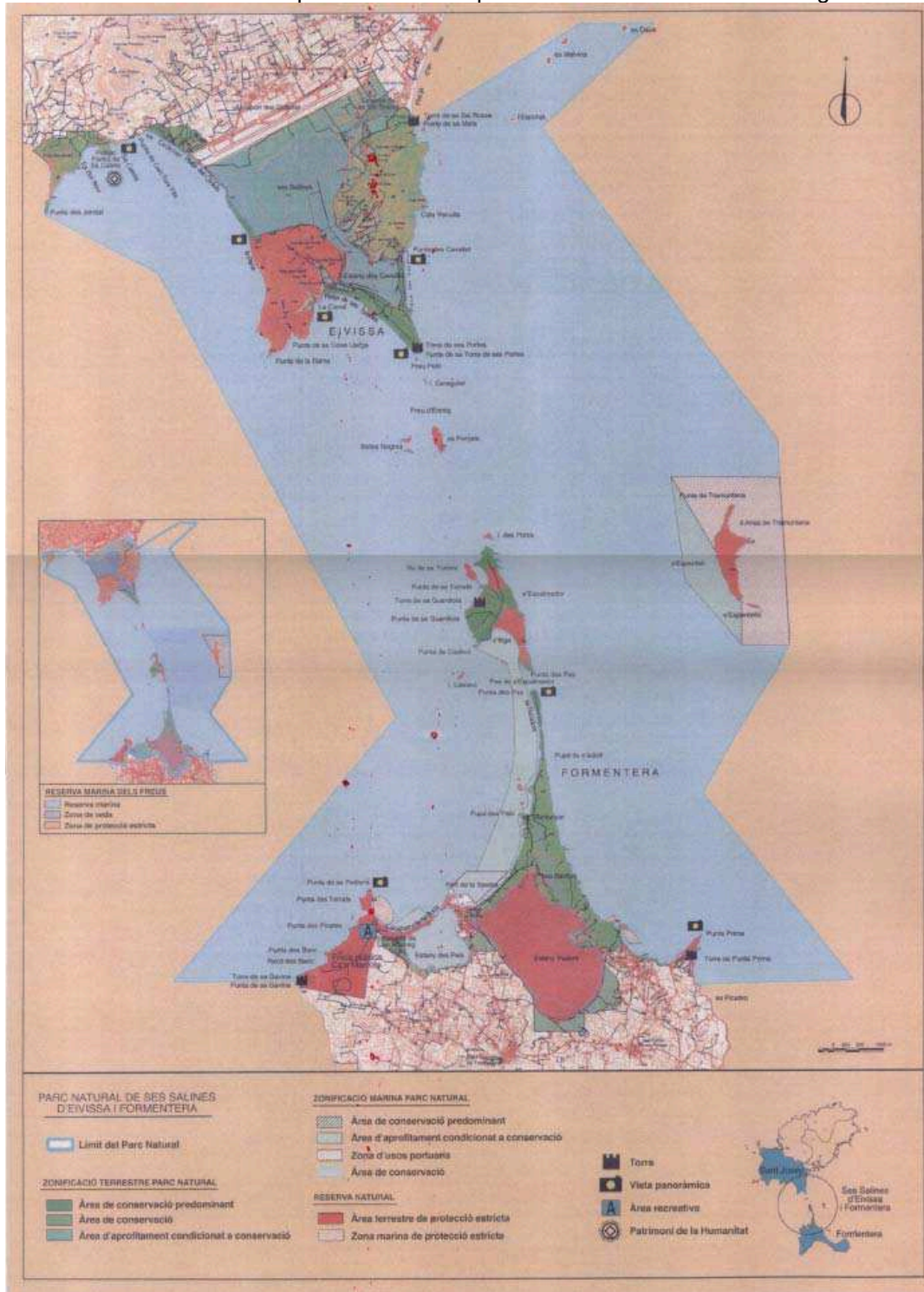
patrimoni@eivissa.es

17.30 h. Institutional meeting

Annex V

Maps and harbour plans

1. Boundaries of the natural park: natural component of the mixed World Heritage site


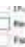



Plano 6 - Zonificación y límites del Parque Natural (Fuente: Govern Balear)


2. Map of Posidonia

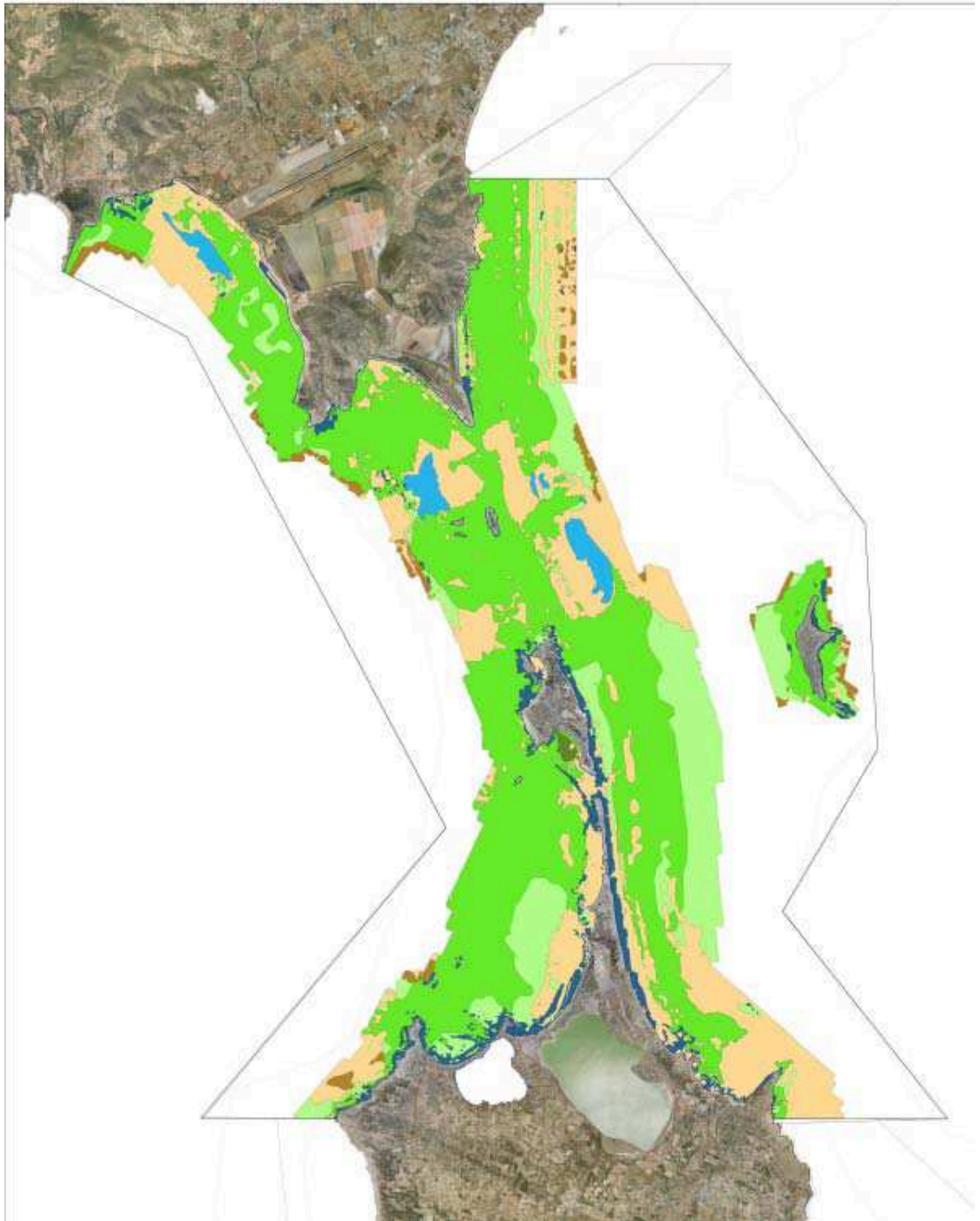
 **Govern de les Illes Balears**
Consell de Medi Ambient
Direcció General de Biodiversitat

POSIDONIA "SES SALINES D'EIVISSA I FORMENTERA"

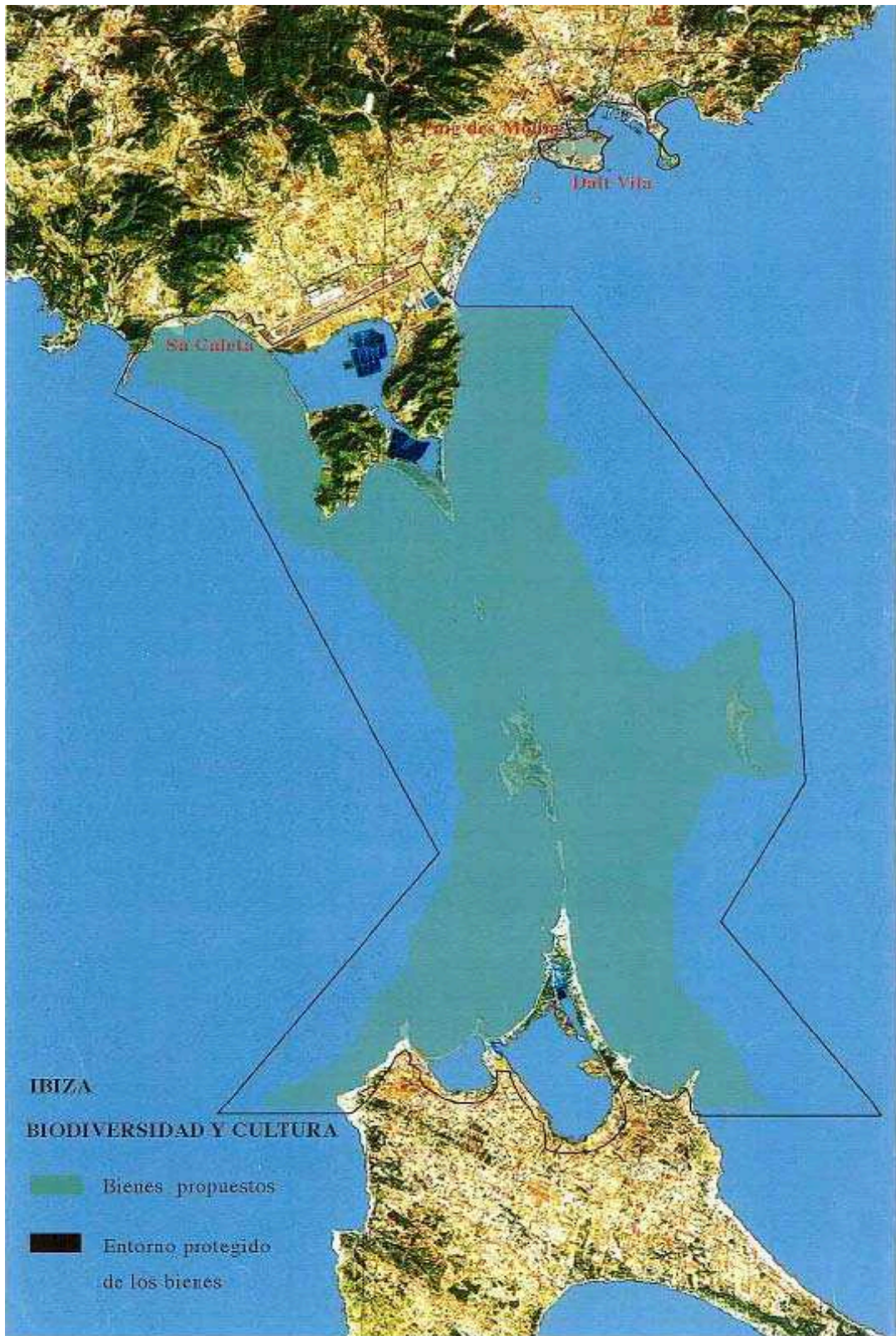
 Situació ambiental
 Reserva marina
 Parc Natural Ses Salines

BINOMIA

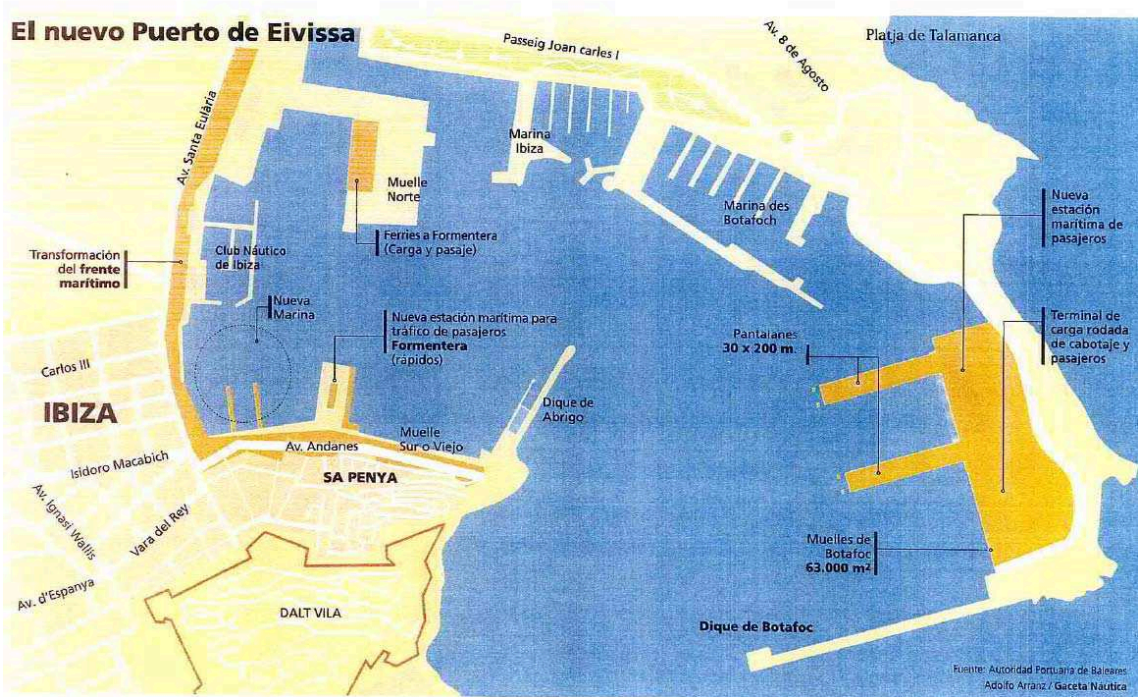
 ACCUMULACIÓ DE BIODIVERSITAT DE POSIDONIA
 CYNANOLOGIA
 DETRITIC
 FONDS BLANCS
 POSIDONIA COM COBERTURA MÀXIM DEL 70%
 POSIDONIA COM COBERTURA MÍNIM DEL 70%



3. Inscribed World Heritage property



4. Map of port project



5. Aerial view of the harbour of Ibiza



6. Map of the property and the “zona de vertigo”: distances to the site

